



Prepare the way!



Evergreen Echoes

LWML Washington-Alaska District

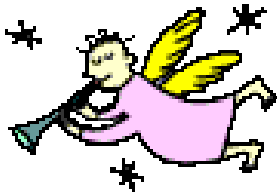
Winter, 2012

DISTRICT PRESIDENT MARYLYNN HUNTWORK

In This Issue

President's Thoughts	1
LWML WA-AK	
District News	2
Zone & Society Corner	7
District Roster	11

**EVERGREEN ECHOES SPRING
DEADLINE: JAN. 31, 2013**



Mission Statement of the LWML

The mission of the Lutheran Women's missionary League is to assist each woman of The Lutheran Church—Missouri Synod in affirming her relationship with the Triune God so that she is enabled to use her gifts in ministry to the people of the world.

Greetings to you in the name of Christ our Savior! I love this time of year because fall leads to the season of Christ's birthday celebration and winter. Thank God for the ultimate sacrifice of His Son, Jesus.



The 2012-2014 LWML WA-AK District Biennium Theme was announced at the Board of Directors meeting, "**Prepare the Way.**" Like the angels that God sent to His chosen so are we chosen to share this life-giving message with others; Jesus was born and died for you! We are called to share our story of faith and trust in God.

Recently, leaders of LWML and the 40 districts met at Inspiration 2012-PING! (Prepare, Inspire, Nourish and Go) to form action plans to spread the word about Christ, His love for all people and how LWML succeeds in that mission. In *Mark 7:15-19* Jesus tells the crowd, "*Nothing outside a person can defile him by going into him. Rather, it is what comes out of a person that defiles him.*" When the disciples questioned Jesus about the meaning, he explained again. It isn't what goes into the stomach but what comes out of a person's heart. Do you get it? Can you hear me now? We will be presenting the action plan to help us be messengers of God at your spring Joyshop or fall Rally.

Mite collection is so important to all districts. Lutheran Women in Mission raised over \$100 million in mites for the past 70 years, funding thousands of mission projects from around the world. LWML districts step out in faith knowing God's will is done. What are you doing in your zone, society or congregation?

Resources are available in the LWML catalog to help zones and societies with event planning. Public Relations Chairman, Gigi Lutz, has many items from the LWML catalog and WA-AK District. Contact Gigi for more information.

(Cont. page 2)

President's article cont.

The 2013 LWML Convention in Pittsburgh is 6 months away! The 2014 district convention in Wenatchee is 18 months away! Make plans now! Check online for the District Calendar of Events.

Lutheran Women's Missionary League Washington-Alaska District will be "Messengers of God." With the power of the Holy Spirit we will prepare those who will inherit salvation by going out with confidence to share Jesus' love through our mites and actions. God's blessings as you continue to be a part of this huge Mission Field!

Love in Christ,
MaryLynn Huntwork, LWML WA-AK District President

And he will send his angels with a loud trumpet call, and they will gather his elect from the four winds, from one end of the heavens to the other. Matthew 24:30-31

District News

Public Relations

The Advent Bible Study is now available on our website! Share with your sisters in your society!

As you plan for the upcoming convention, you may want to visit our WA-AK District website:

www.wa-aklwml.org and click on DOWNLOADS on the opening page to print out shirt order forms for clothing that has the embroidered WA-AK District logo. Mail the completed form with your check as instructed on the form.

The 2013 LWML CONVENTION, June 27-30, is in Pittsburgh PA. The LWML Convention Shirt Order Form is available at www.lwml.org/conventions. No shirts will be sold at the convention—get your form through this website and post-mark the order before May 15, 2013. —Gigi Lutz,
Public Relations Chairman

Leadership Development Committee

How Do We "Prepare the Way?"

Our challenge for the 2012-2014 biennium is to share Jesus' love through our mites and actions. The leader development committee is praying that we continue to follow through on the good intentions we identified in the "Growing LWML" game at the 2012 district convention display.

Are we inviting other women to society functions and offering them transportation? Are we sharing the joy of group Bible study? Are we offering help to those in need? Where can we find fresh ideas and programs to offer?

LWML has many great resources, both in print and on CD, to assist in sharing Jesus with those around us. Check out the "white pages" (pp. 15-38) of the 2012-2013 LWML Catalog. There we can find many ideas and programs, some with step-by-step instructions (e.g., the Rekindling Kit) to help us serve and lead our LWML societies. Some ideas can also be accessed at www.lwml.org

President MaryLynn and the Washington-Alaska District Board of Directors are leading us to be "Messengers of God." Let us join with them to bring the good news of our Lord wherever and whenever we are able.

Marilyn Schaefer, Chairman
Leader Development Committee

Human Care Dept.

Greetings to all!

How fast this year has gone. Here we are planning the 2014 district convention already! I am pleased to announce that I have a full department. All three committees are equipped with a chair and members at this time. We do need a couple of committee members for the short term mission committee.

We accomplished several tasks at The Board of Directors meeting. The design for the Pittsburgh banner was a fun project. I can't wait to see the finished product!

Look for the fun plans by the Friends Into Serving Him® and the Short Term Missions committees.

The Gifts of the Heart ingathering at the Board of Directors meeting the first weekend in November was very successful. We had six boxes and eight bags of non-perishable food items donated and \$196.00 for the purchase of turkeys for Thanksgiving food baskets at the food bank in Wenatchee.

Keep a look out in your email for the next Gifts of the Heart project for the LWML convention this next June in Pittsburgh. Maybe plan to use this as an ingathering for your spring Joyshop or Rally.

Many plans are being made for the 2014 district convention in Wenatchee. I believe it will be spectacular! Get excited and get your societies excited!



The Advent season will soon be here; let us all be thankful for our blessings and continue our walk with the Lord as we serve Him with gladness.

Our new Short Term Mission chair, Traci Blank, will be introducing herself in this newsletter. Traci has been on a mission to Africa and is excited about equipping your zone with tools and resources to do the same. She will contact each zone presidents.

Please invite her to visit your zone. She is excited and motivated. It is contagious; I promise!

Blessings,

Sandi Hall, VP Human Care Dept.

Short Term Missions (Part of the Human Care Committee)

Hi,

My name is Traci Blank, and I am your new Short Term Missions chairman. What I would love to do is come to your fall Rally and/or Joyshop to speak to your LWML zone about going on a short-term mission. My mission is to provide opportunities and resources for people to find their mission.



Structure Committee

When this *Evergreen Echoes* is out, Halloween will be over; and we will be into the holiday of Thanksgiving. So much of the commercialism around Halloween is skeletons, witches, bats, etc. They can be scary.

Bylaws can also be scary and maybe like Bessie Lou Bylaws, they might be old. The LWML Washington-Alaska District has entered a new biennium. Are your bylaws ready to enter the new biennium? The District Structure Committee is ready and willing to assist. We do not want your bylaws to be scary but to be a blessing. Help is a click away at www.wa-aklwml.org or email Marie Chow.

Doctors of Structure-Bylaws,
Marie Chow, Sandra Geisler, and Ruth Ann Shimoi



Gospel Outreach

Think Inside
the Box



The Mission Grant Biennium Theme was introduced to the District Executive Committee and Board of Directors on Nov 1-2. Please keep thinking inside the mite box as you support the grants with your donations. We have paid \$15,150 of our district biennium goal of \$87,000. Updated grant information can be found at www.wa-aklwml.org along with grant highlights and prayers. Please use this information to spotlight your mite collections.

Here is an important reminder: ALL MITES COLLECTED in societies and zones MUST BE SENT TO THE DISTRICT FINANCIAL SECRETARY. Please make sure all your treasurers know this.

The district sends 25% of mites received to LWML to fund their biennium goal of \$1,875,000. March 31, 2013, is the deadline to reach this goal, and currently LWML is behind. Please be consistent in sending your mites. Praise God for your blessings as you donate to the blessings of others.

Thank you and continued blessings as we begin another church year and celebrate our Savior's birth.



Marilee Ryan, VP Gospel Outreach
Mission Grant committee members,
Joyce Berger and Cristina McAnulty




Mark your calendar! Save the date!
WA-AK District Retreat
Wesley Inn - Gig Harbor
September 27-29, 2013

LWML And one called to the other and said:
 "Holy, holy, holy, is the LORD of hosts;
 The whole earth is full of His glory!" Isaiah 6:3

September 2013

Sun	Mon	Tue	Wed	Thu	Fri	Sat
1	2	3	4	5	6	7
8	9	10	11	12	13	14
15	16	17	18	19	20	21
22	23	24	25	26	27	28
29	30					

RETREAT

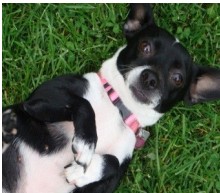


***Advent Bible Study 2013 will be posted on the Web at**
www.wa-aklwml.org/downloadspage.htm

****Shout out to all Zone and Society Christian Life Chairman: the District Christian Life Committee sends greetings. We want to know what you are up to and how we can help. We will be in contact - but also please give us a phone call or email! —Cheryl L. Beyer**

Christian Life

And He said to me, "My grace is sufficient for you, for My strength is made perfect in weakness." Therefore most gladly I will rather boast in my infirmities, that the power of Christ may rest upon me.
 2 Corinthians 12:9 NKJV



It amazes me to think that God "rescued" and brought this little, lost, unwanted, helpless, death-row, dog named "Gracie" from Southern California to my house in Lynnwood Washington! In rescuing "Gracie," God reminds me that I am rescued by His Grace. God in His Grace loves me unconditionally and is always with me. Grace is good for me. When I walk with Grace, I am at peace; and there is happiness even on the worst days. God reminds me that His Grace is sufficient for me. He is exactly what I need.



As we go through this winter season, the end of one church year and the beginning of another, let's not get so wrapped up in our lives and ourselves...so mindlessly busy that we forget that Grace abounds. Grace abounds! GRACE ABOUNDS! Let's be thankful for God's Grace. Let's celebrate the Grace of God in the birth of our Savior Jesus. Let's share the Grace of God with those around us who also need rescuing.

The grace and power of Christ rest upon you!
 Your sister in Christ,
 Cheryl L. Beyer, VP Christian Life Committee

Corresponding Secretary: LWML DISTRICT ROSTER UPDATES— Please keep your information updated and current. Both zone and society roster forms are on the website. Copies of the forms are also available from your zone president. It is important that you complete the forms with all the appropriate information including how many are in your society. There are 98 societies and 11 zones in the Washington-Alaska District. Keeping everyone's information updated is not an easy task; however, if the forms are sent in on a timely basis it really helps a lot. The roster provides address information for the *Evergreen Echoes* and the bulk mailing.

MITE BOXES – if you need mite boxes first check with your zone president as she should have a supply – if not, I can send mite boxes to you.

—Linda Miller, Corresponding Secretary



Recycling news



Funding Factory has made some major changes that benefit their customers. All cartridges are accepted now with a minimum of 10 cents awarded. There are games to play for prizes. So far I haven't won anything, but I'll keep trying ! If you refer another school or organization to use FF for their recycling and fundraising efforts, we get a \$50 referral bonus.

The steps to follow in order for us to receive the bonus:

1. Choose "Referred by Participant" during registration.
2. Provide our organization ID#27489.
3. Send at least one box of qualifying items within six months of registration.
4. Round up old digital cameras, laptops, GPS systems, MP3 Players, all ink and toner cartridges (not toner tanks).
5. Pack the electronics with other items following the 20/20 rule: at least 20 items OR at least 20 lbs. but no more than 40 lbs.
6. When packing, wrap cartridges in newspaper so no ink will leak onto the electrical items. More information is available at www.fundingfactory.com. **"The earth is the LORD'S, and everything in it," Psalm 24:1a**

Judy Peraino, Recycling Coordinator

ARE PEOPLE RECYCLED?



Joy to you,

Sometimes I feel recycled, like an empty milk jug or an aluminum can. I am often used up and crushed. I am expected to come back refreshed and improved. That is tough to do—to be used and crushed and to come back with a smile. What to do?

1. Think positive thoughts—maybe—but I have found this to be only a bandaid covering up the wound but not dealing with it.
2. A change of scenery, taking a holiday, going on a cruise, or visiting a new place are possibilities. They can refresh a person for a while; but like a room refresher, its aroma disappears.
3. Solitude and contemplation sound like good ideas, but for me they don't help. I look at my failings and unfulfilled dreams, and I can't lift myself up.
4. I have found my hope in a quote from a well-known author, St. Paul. *"Therefore, if anyone is in Christ, he is a new creation; the old has gone, the new has come!" I am not recycled. I am new in Christ.*

Ken Schauer
Counselor East



PLEASE COPY THIS ISSUE FOR THE LADIES IN YOUR CHURCH! PRINT IT IN GRAYSCALE FOR COPYING ON THE COPY MACHINE OR PRINT OUT ALL THE COPIES IN COLOR. IF YOU WOULD LIKE TO RECEIVE ISSUES VIA E-MAIL, PLEASE CONTACT THE CIRCULATION MANAGER, DENISE CRAWFORD.



The Ripple Effect

One of the amazing things about ministry is the way God uses individuals to accomplish His plans. Think about the way water ripples when a raindrop hits the surface, circles that expand outward. LWML women are the raindrops! Each of us answers God's call to service, missions and fellowship. Our enthusiasm may lead to the development of a service project at our church that involves additional church members. That project impacts both those who receive and those who

give. Perhaps one woman who participates in the project learns more about a community need and shares that information with a friend or neighbor, who also takes action. Our response to God ripples out to those around us to impact many and move mountains.

If you are a young Lutheran woman, you may be new to LWML. You may not realize yet how your participation can lead to ripples throughout your church and community, and missions around the world. Our committee is here to tell you that your participation makes an impact! Go to <http://www.wa-aklwml.org/youngwomen.htm> for an application to attend the LWML convention in Pittsburgh in June 2013 and learn more about LWML at the national level. Deadline is December 8.

The Young Women's Committee is here to support you as you answer God's call, whatever that may be. We can be reached through the District website, and would love to speak with you!

Your Young Women's Committee, Amanda Haan & Chris White

For each Young Woman Representative application received by December 8, 2012, to attend the LWML convention in Pittsburgh in June, 2013, the applicant's society and zone president will receive a gift as a thank you for supporting and encouraging the young women of our district!

Zone and Society Corner



Olympic Zone

Picture on left

Pastor Mankin presenting his trip to the Holy Land to the Olympic Zone.

Picture below

Olympic Zone Fall Rally decorations, including Ingathering hats, gloves, and socks strung as garland on the church pews.



Alaska Zone Fall Retreat

Greetings from Alaska! We held our fall retreat in beautiful Homer, Alaska, from September 28 through September 30, 2012. We had 65 people in attendance. It was especially nice that our WA-AK District President, MaryLynn Huntwork, was able to make it up to our fall retreat! Our morning fellowship began with a walk along the beach and morning devotion. We experienced the most beautiful sunrise imaginable! It truly felt like God’s hands were there with us all. Our bible study was led by Cassie Jeremias, Christian Life Chairman, and was entitled L.I.G.H.T., or “Living in Grace, Hope and Trust.” The silent auction helped raise \$1,400 for the local Pregnancy Care Center. We also watched a powerful movie entitled “October Baby,” which expressed love and forgiveness. Pastor George Rakos, of Funny River, led our communion service and also reinstated the re-elected LWML officers. We truly had a blessed retreat! Blessings to all



--Linda Gerdes, Alaska Zone President.



Above: Alaska Zone officers

Left: Alaska Zone Fall Rally and Retreat attendees

Zion Emmanuel Lutheran



Pastor Mark Squire was installed at Zion Emmanuel Lutheran in July. Zion Emmanuel is in the South Columbia Zone.

Washington-Alaska Zone and Society Corner

Mt. Baker Zone Rally

The Mt Baker Zone Rally was hosted by Concordia LWML and held at Concordia Lutheran Church in Oak Harbor, WA, on Oct. 13. Sixty-one ladies plus five guests gathered to hear Cathy & Tom Benzler speak about their work among the lower Elwha Klallum people, and the extended work they will be doing throughout the Olympic Peninsula in proximity to the different reservations.



The Benzler's received a \$9,000 grant from our LWML WA-AK District mites!! We also collected 141 food items for the local food bank!

Each lady received a beautiful purple cloth flower pin made by two ladies in the Concordia society. What a great memento of a fun day!



Concordia ladies are also getting ready for their annual bazaar. All proceeds will be donated to mission projects.



—Submitted by Nancy Wyckoff

Concordia President, Donna Allen with Cathy and Tom Benzler.



Outgoing zone president, Julie Onken, pins new zone president, Joyce Berger.

Trinity LWML, Bellingham

Peggy Lohse, district LWML recording secretary, presents a check for \$2,660.66 to Heidi Unick, Director of Amy's Place (a program of Old Town Christian Ministries), which is a drop-in center in Bellingham for homeless youth up to the age of 24. This check represents the second offering taken at the LWML Washington-Alaska District convention this past June. Others in the picture are Priscilla Baker, a member of Trinity Lutheran Church in Bellingham and a volunteer at the center. Pat Horst (r.) is the president of Priscilla's LWML society at Trinity Lutheran.



Volunteers provide personal hygiene items, a hot meal, counseling, and a kind, listening ear, hoping the teens gain self-confidence, vision, hope, and stability.

The people in the picture below are Priscilla, Pat, Heidi, and Peggy. Quilts were made and donated by the "Busy Hands" quilting group at Trinity.

Submitted by Peggy Lohse



St. Paul LWML Quilters, Wenatchee

The LWML quilters (the piecemakers”) at St. Paul’s in Wenatchee are busy making **100 quilts** for world relief and many other quilts for the Wenatchee School District Homeless Project. St. Paul’s will be celebrating it’s **100th anniversary** in 2013, and the quilts are but one of the **100 projects** that are planned. Dorothy Reed, who sews together most of the tops will also celebrate her **100th birthday** next year. The group of about 9 meets weekly to complete the quilts. They have made 50 quilts so far but have already given 11 to the Wenatchee School District Homeless Project. Winter is coming so it will be hard to tell if we will have 100 quilts for world relief by May. —Linda Miller



100

100

100

100 *The Makah Society* has been busy sewing blankets and holding fundraisers. We have a goal of making **100 lap blankets** for senior citizens by Christmas. Some of the ladies love to just cut out the squares while others prefer to pin fabric or sew. We have ladies from the LWML and ladies from the community working on this project. One thing that makes this a bit challenging is that we already had a program in place where we would give a baby package to our new parents, which includes a blanket, a hat, booties, and a card. We work closely with the Girls' Club, which is led by two ladies from our LWML group.

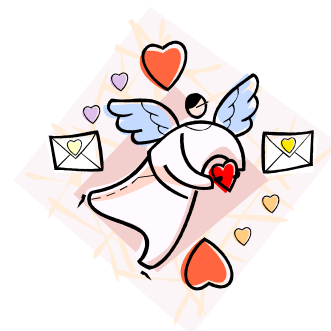
Six ladies from the Makah Lutheran Church attended the LWML WA-AK District Convention in June. This was a big group for us considering we officially have five ladies in our LWML. It was wonderful to see mite proposals. There were many amazing projects! Everyone was so gracious, we really enjoyed it! June Williams was appointed as the Heart to Heart Sisters Chairman and Vicky Druge was elected to the Nominating Committee.



Ladies from the LWML and congregation helped host different servant event groups that came to Neah Bay. They helped with greeting them, feeding them, and welcoming them. A big thank you to the servant event groups and to the ladies!

—submitted by Vicky Drug

PREPARE THE WAY!



District website:

www.wa-aklwml.org

Deadline for next issue: Jan. 31, 2013.

Evergreen Echoes is published quarterly by Lutheran Women's Missionary League, Washington-Alaska District, an auxiliary organization of the Lutheran Church—Missouri Synod. *Evergreen Echoes* Editor: Sandi Schauer.

Evergreen Echoes

Lutheran Women's Missionary League
Washington-Alaska District
PO Box 615
Republic, WA 99166

ADDRESS SERVICE REQUESTED



Non-profit Org
US Postage Paid
Permit 42
Republic, WA 99166

*The Angel of December
is the angel of generosity.
The December angel celebrates with us this
time of giving gifts to all the wild
creatures and to all of God's children.
The angel of December leads us to join
hands with people of all races and
religions, recognizing that we are
children of the same creator, and we all
share the responsibility of bringing joy
and health upon the earth. Inspired by
December's angel, we can celebrate
this season of brotherhood by doing
one act of kindness every day—going
out of our way to bring warmth
and light into another's life.*

